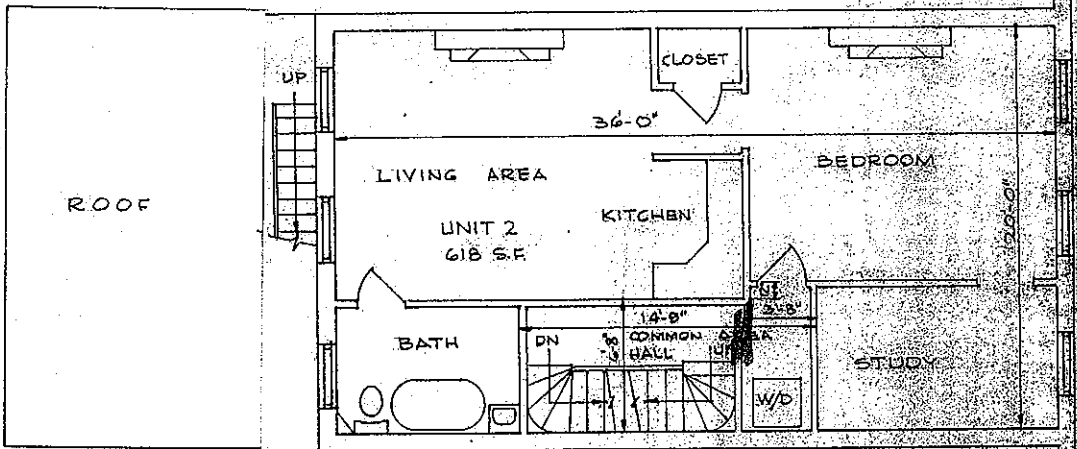


THIRD FLOOR PLAN - UNIT 3 - TOTAL AREA = 654 S.F.

SCALE: 1/4" = 1'-0"



SECOND FLOOR PLAN - UNIT 2 - TOTAL AREA = 618 S.F.

SCALE: 1/4" = 1'-0"

**LEGEND**

- 1. DN = DOWN
- 2. CLO. = CLOSET
- 3. MECH. = MECHANICAL
- 4. HW. = HOT WATER
- 5. W/D = WASHER/DRYER
- 6. S.F. = SQUARE FEET

FOR REGISTRY USE ONLY

**NOTES**

- 1. ALL AREAS SHOWN ARE APPROXIMATE INTERIOR AREAS.
- 2. ALL MEASUREMENTS ARE TO THE INTERIOR FACE OF WALL STRUCTURE.

I, ANTHONY DI FRANCISCO, REGISTERED ARCHITECT, DO HEREBY CERTIFY THAT THIS PLAN FULLY AND ACCURATELY DEPICTS THE LAYOUT, LOCATION, UNIT NUMBERS AND DIMENSIONS OF THE UNITS NUMBERED 1, 2, 3 AND 4 IN THE RUTLAND STREET 67 CONDOMINIUM, AS BUILT PURSUANT TO MASSACHUSETTS GENERAL LAWS, CHAPTER 183A, AND FURTHER CERTIFY THAT THIS PLAN CONFORMS TO THE RULES AND REGULATIONS OF THE REGISTRY OF DEEDS.

ANTHONY DI FRANCISCO  
ARCHITECT

DATE

THE RUTLAND STREET 67 CONDOMINIUM  
67 RUTLAND STREET  
BOSTON, MASSACHUSETTS  
ADE ARCHITECTS, INC.